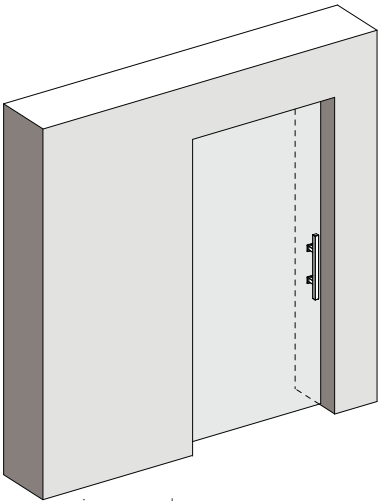


# INSTALLATION INSTRUCTION

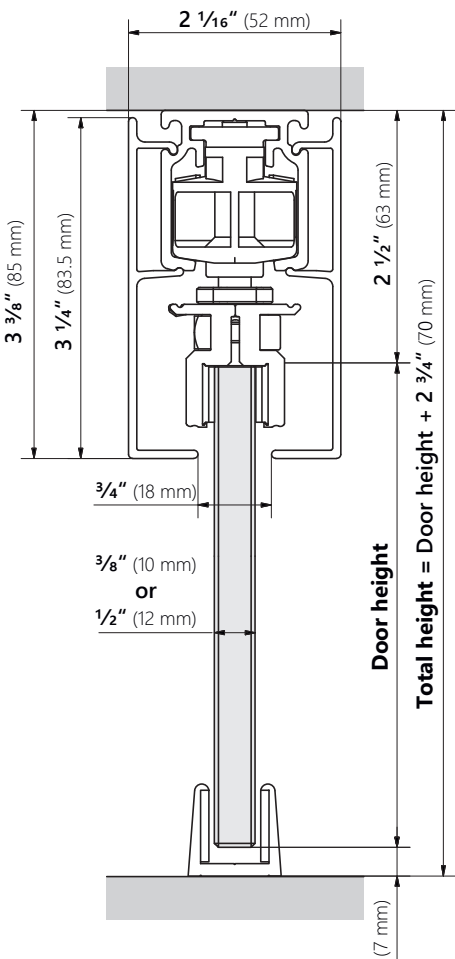
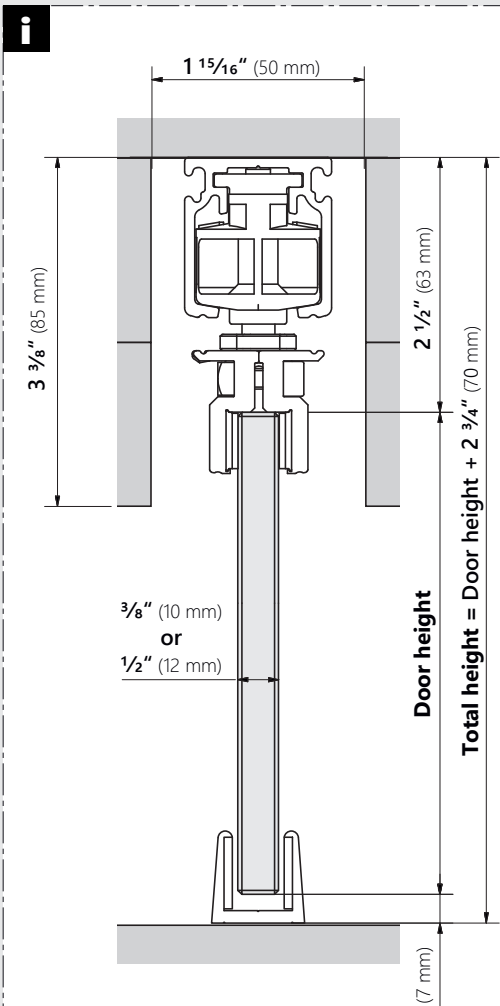
## SLIDING DOOR HARDWARE

article number 0160224



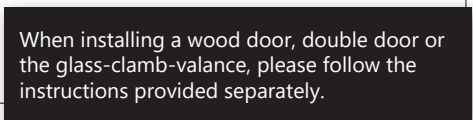
Sliding door hardware  
for frameless glass doors  
up to 176 lb (80 kg)\*

\* The maximum door weight can be increased to 265 lb (120 kg) with upgraded wheels if no limiting accessories are used.





## SLIDING DOOR HARDWARE

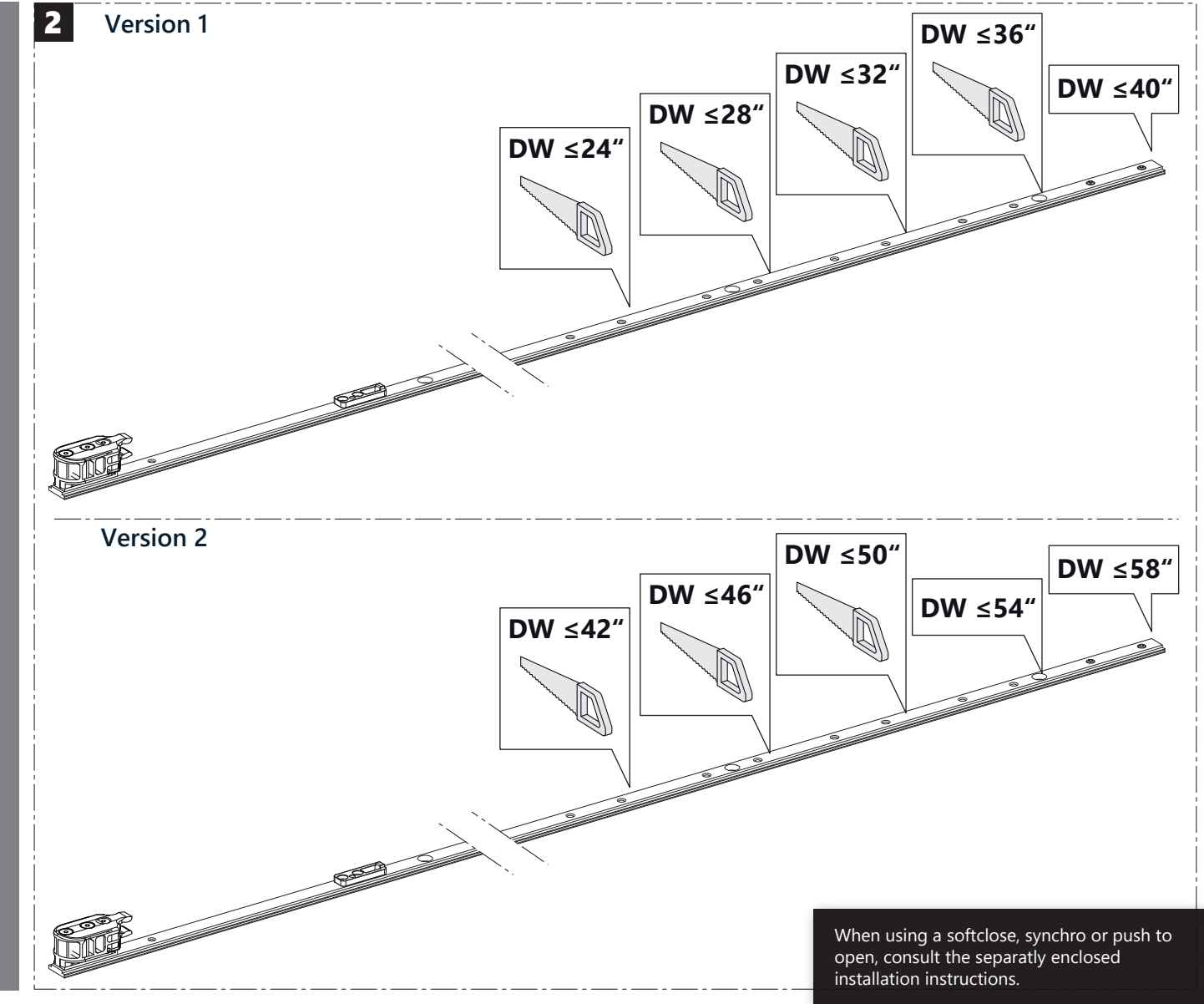
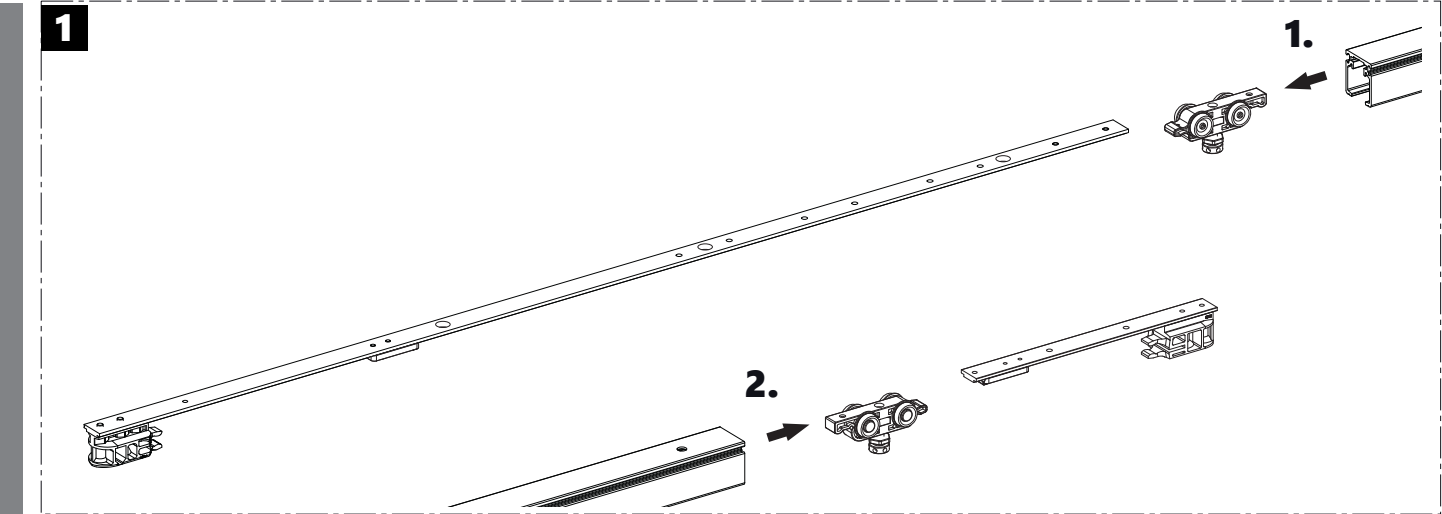


1x 6 mm / 13 mm



# INSTALLATION INSTRUCTION

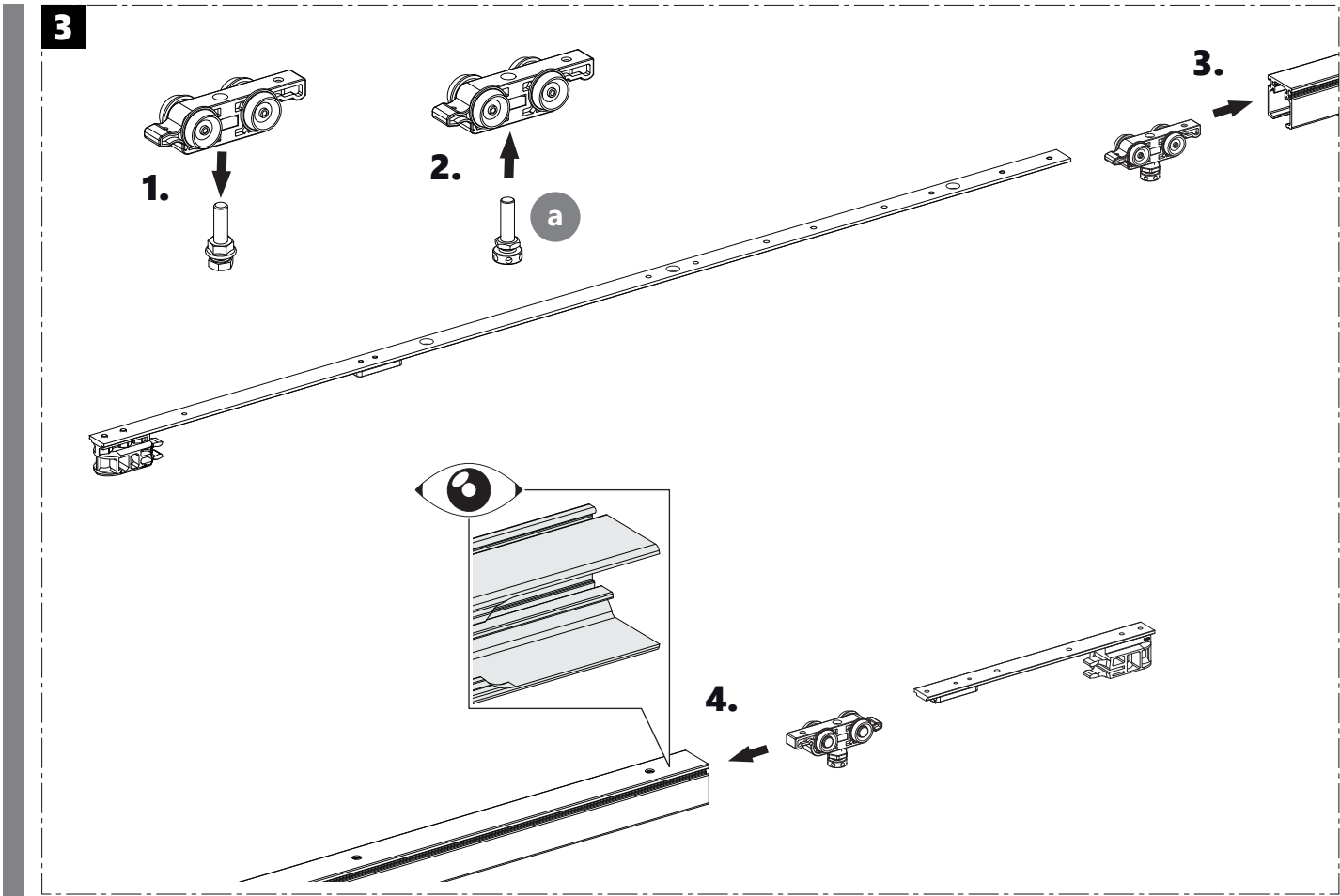
## SLIDING DOOR HARDWARE





# INSTALLATION INSTRUCTION

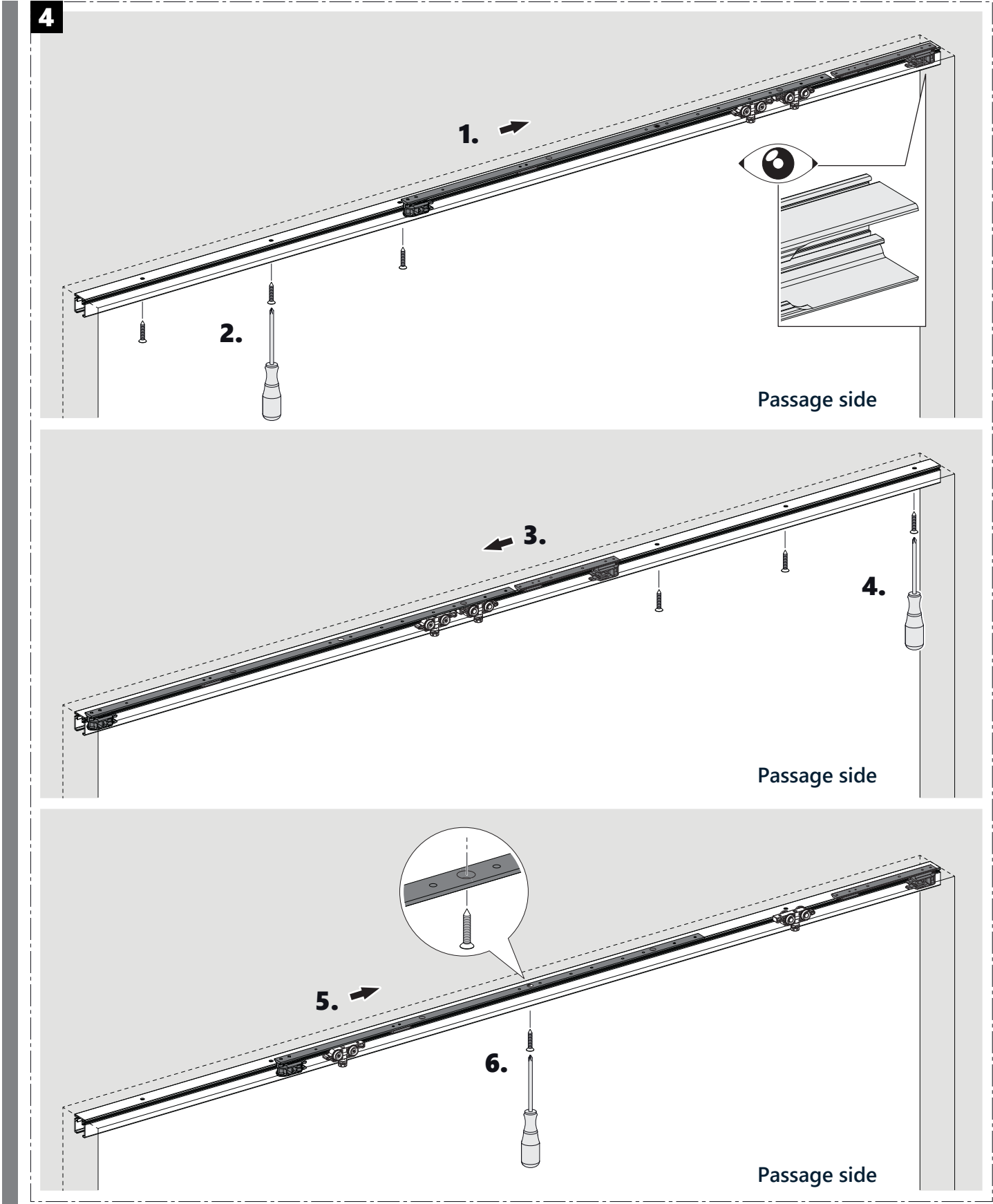
## SLIDING DOOR HARDWARE





# INSTALLATION INSTRUCTION

## SLIDING DOOR HARDWARE





# INSTALLATION INSTRUCTION

## SLIDING DOOR HARDWARE

5



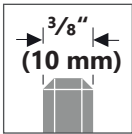
All components including the glass pane must be at room temperature!



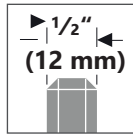
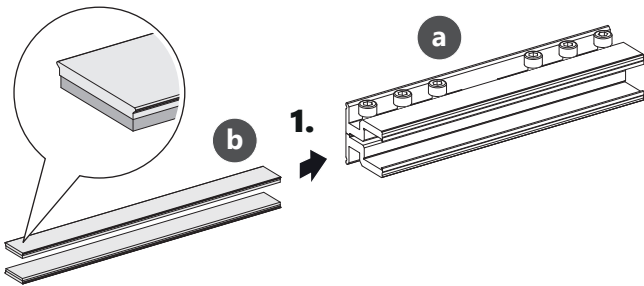
All surfaces must be free of dust and grease!



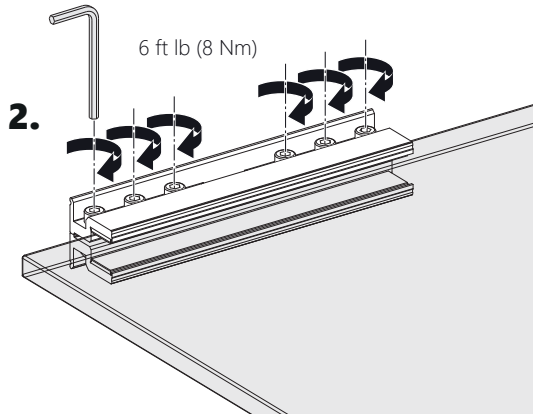
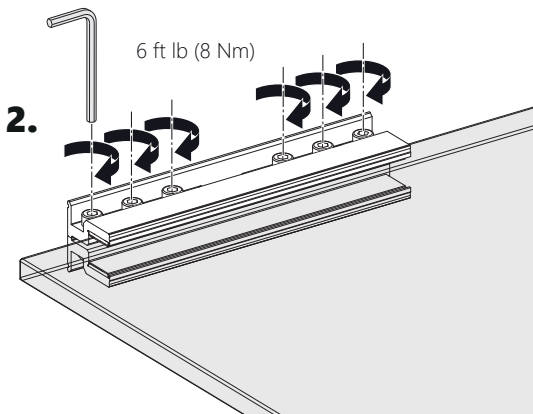
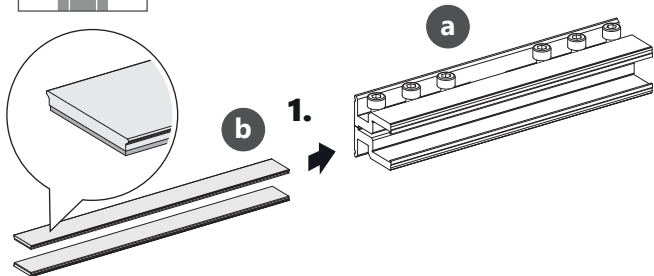
All surfaces must be dry!



Suitable for:  
tempered glass  
and laminated safety glass  
(10 mm, 10,76 mm)



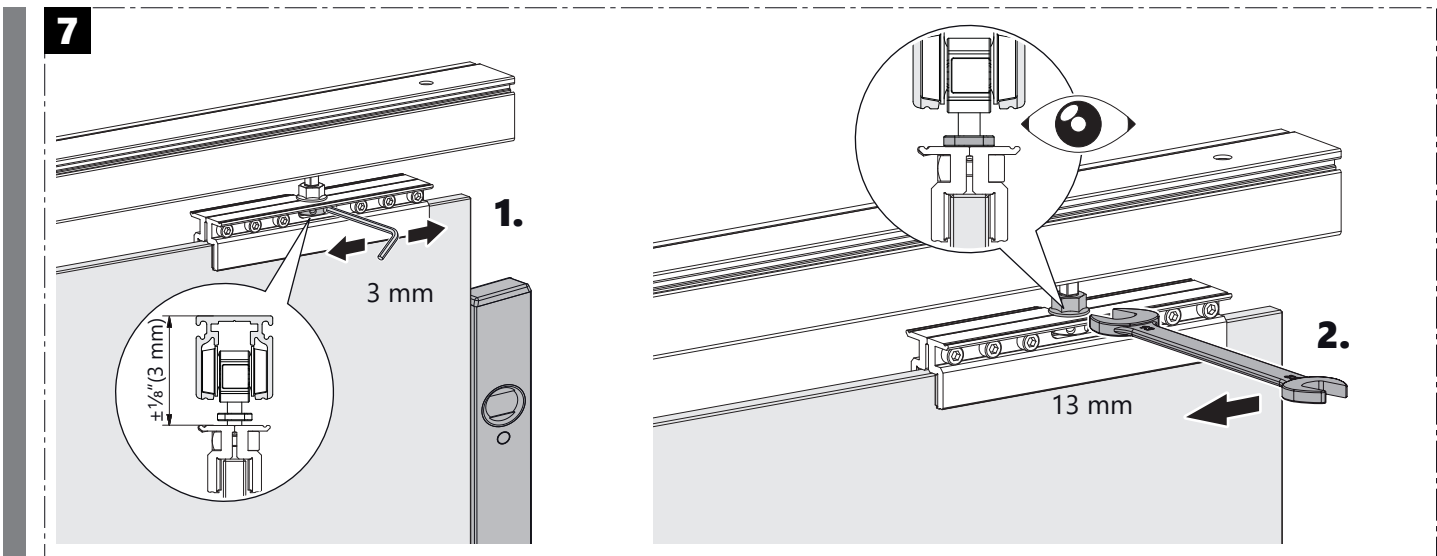
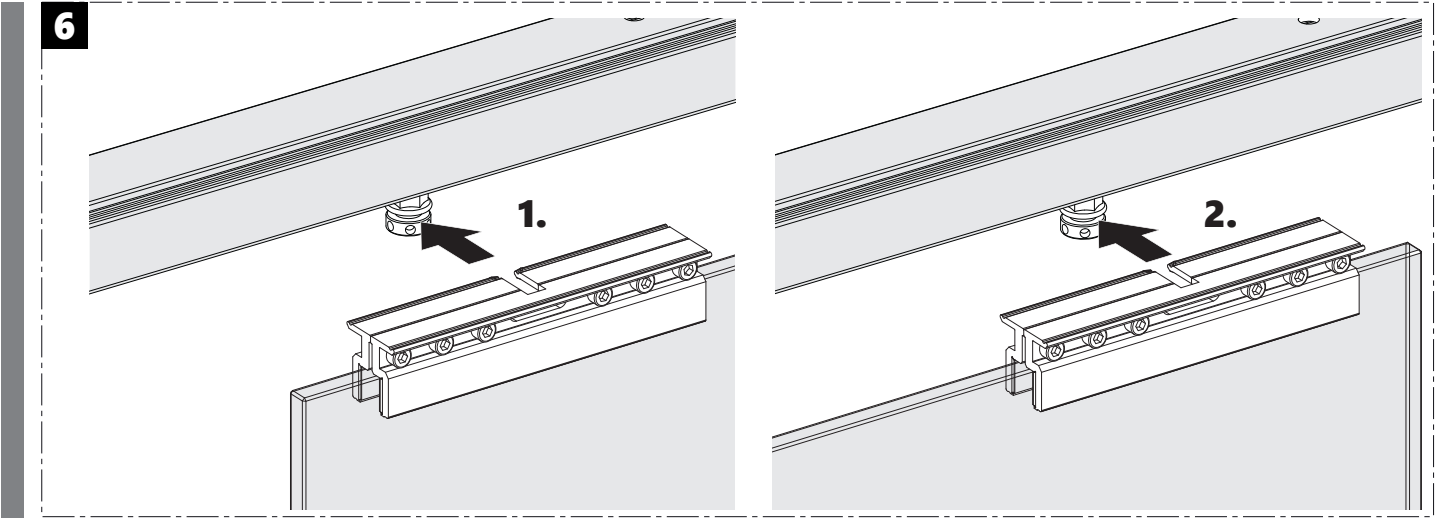
Suitable for:  
tempered glass  
and laminated safety glass  
(12 mm, 12,76 mm)





# INSTALLATION INSTRUCTION

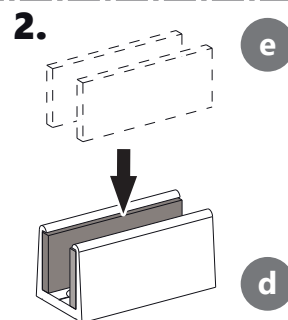
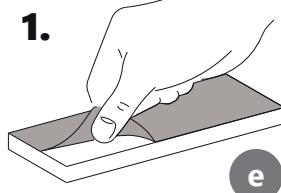
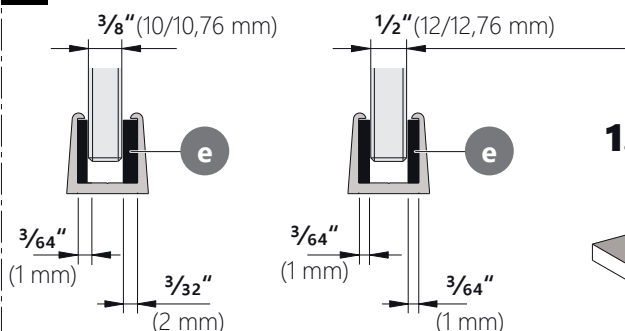
## SLIDING DOOR HARDWARE





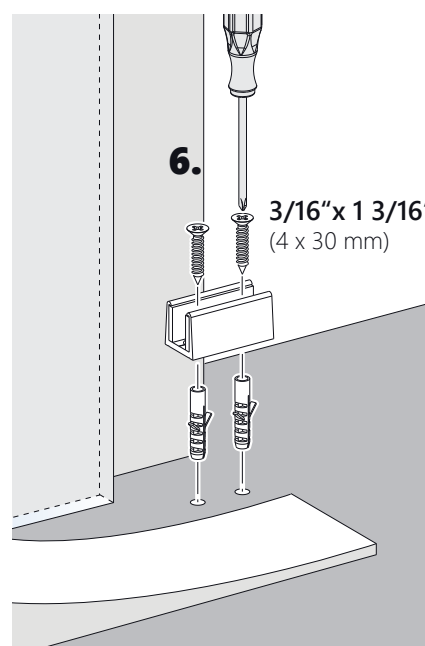
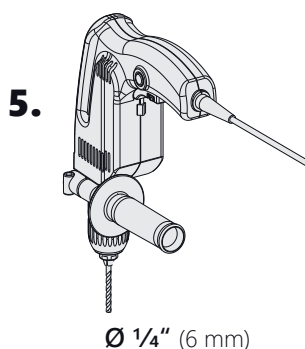
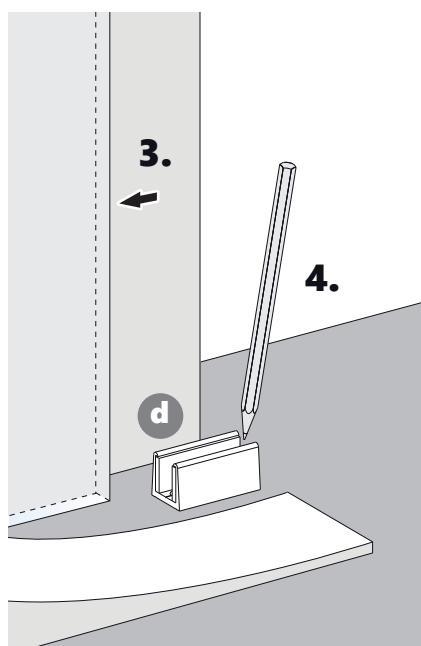
## SLIDING DOOR HARDWARE

8



ATTENTION:

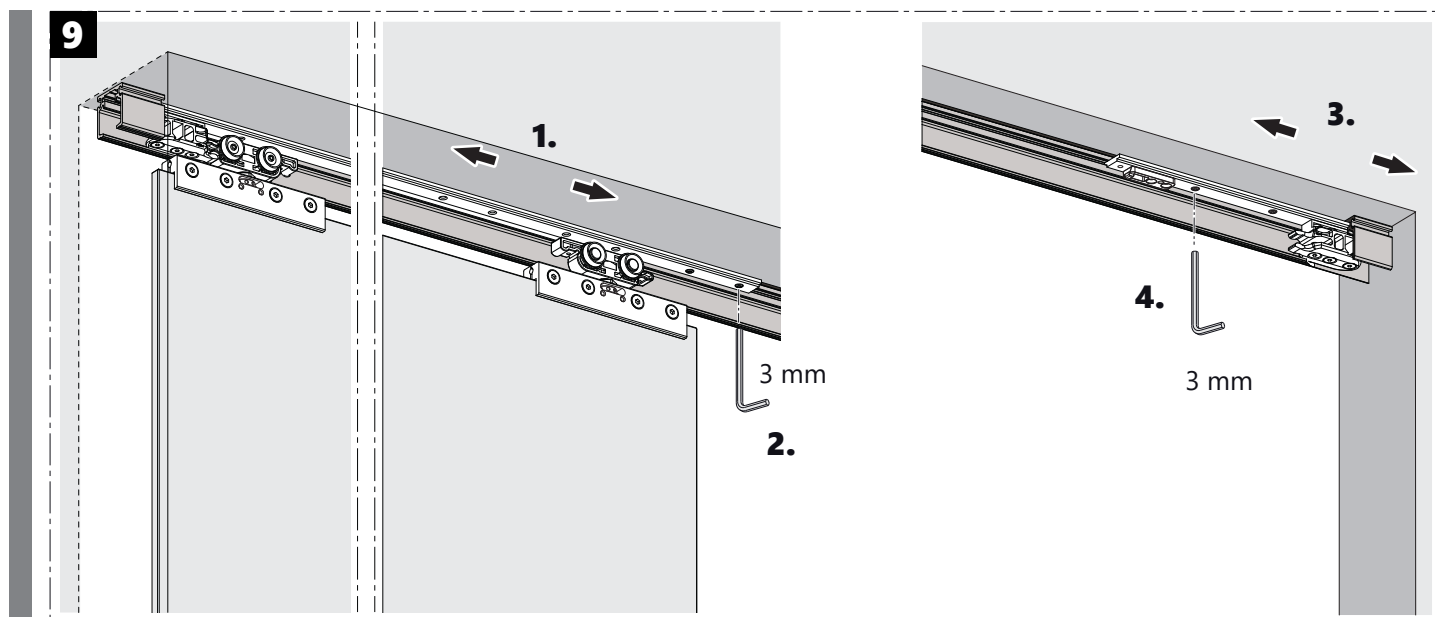
The fastening material must be provided by the customer and must be adapted to the local conditions!





# INSTALLATION INSTRUCTION

## SLIDING DOOR HARDWARE



### Replacement of parts through the inspection opening

