



BOXtrack

Modern barn door track
For wood and glass doors
Up to 265 lb door weight

Experience the BOXtrack difference



Luxurious, elegant and durable

The BOXtrack is the perfect sliding door system for those who want the best of the best in just one set. Its beautiful C31 (similar to stainless steel) or C35 (black) anodized track and matching end caps give it a luxurious and polished look that complements any decor.

This premium system features sturdy, smooth running and quiet ball bearing slides, and if you are looking for even more convenience, you can also install the soft close mechanism, which ensures that the door panel opens and closes in a smooth and controlled manner.

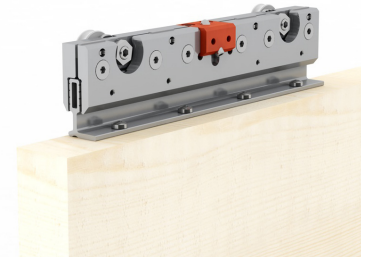
This German-manufactured system is specifically designed for sturdy, heavy-duty glass or wood doors. Its hardware is made of aluminum and is capable of supporting a door panel weighing up to 176 lbs with the soft-close feature, and up to 265 lbs without the soft-close feature.

Technical Features

Sliding barn door system, for wood doors



- Elegant C31 (similar to stainless steel) or C35 (black) anodized color sliding door system
- Compatible with wood doors up to 265 lb.
- System dimensions: 78 15/16" (2005 mm)* long, 2 3/8" (60 mm)* high, and 2 9/16" (64.5 mm)* deep, including color-matched end caps
- Fits wood leaves from 21 5/8" (550 mm)* width to 40" (1016 mm)* width
- Ideal for wooden doors with thickness between 1 3/8" (35 mm)* and 1 3/4" (45 mm)*
- Carriages: robust, smooth, and whisper-quiet running wheels
- Wall mounted or with ceiling mounting option on request for versatile installation
- Flexible positioning of door stop allows full use of track length



The wheel set for wood door panels

runs extremely smooth. It just needs to be screwed onto the wood door panel. The required screws are included.



Floor guide

With the groove at the bottom of the door panel the floor guide allows invisible and quiet guidance of the door.



Track and valance

are made of extruded aluminum profiles. The anodized surfaces plus the color matching endcaps create a top-class visual appearance.

Technical Features

Sliding barn door system, for glass doors



- Elegant C31 (similar to stainless steel) or C35 (black) anodized color sliding door system
- Compatible with glass doors up to 265 lb.
- System dimensions: 78 15/16" (2005 mm)* long, 2 3/8" (60 mm)* high, and 2 9/16" (64.5 mm)* deep, including color-matched end caps
- Fits glass door leaves from 21 5/8" (550 mm)* width to 40" (1016 mm)* width
- Ideal for glass doors with thickness between 3/8" (10 mm)* and 17/32" (13.5 mm)*
- Carriages: robust, smooth, and whisper-quiet running wheels
- Wall mounted or with ceiling mounting option on request for versatile installation
- Flexible positioning of door stop allows full use of track length



Wheel set for glass door panels
Easy attachment to the door panel with adjustable clamps for glass thicknesses from 3/8" (10 mm) to 17/32" (13,5 mm).



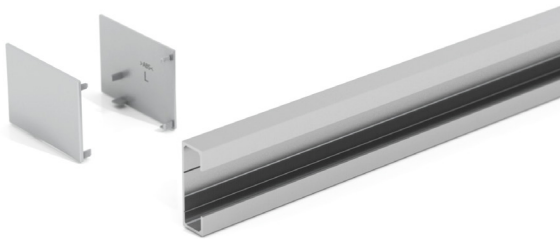
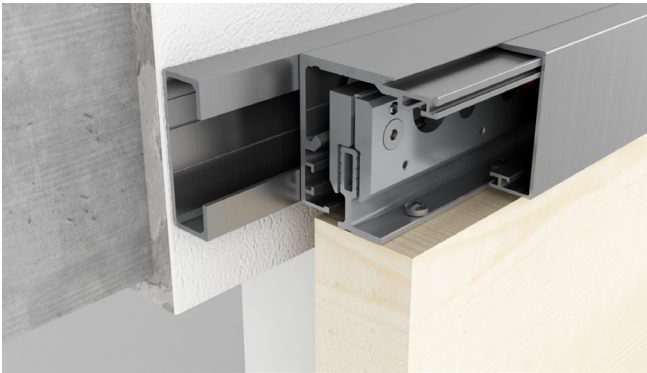
Floor guide
The door panel is quietly guided at the bottom by a two-part floor guide. It inspires during assembly, and impresses with high-quality materials.



Track and valance
are made of extruded aluminum profiles. The anodized surfaces plus the color matching endcaps create a top-class visual appearance.

Technical Features

Distance profile



Optional ¾" (20 mm)* distance profile
for seamless integration with existing door casings or baseboards.

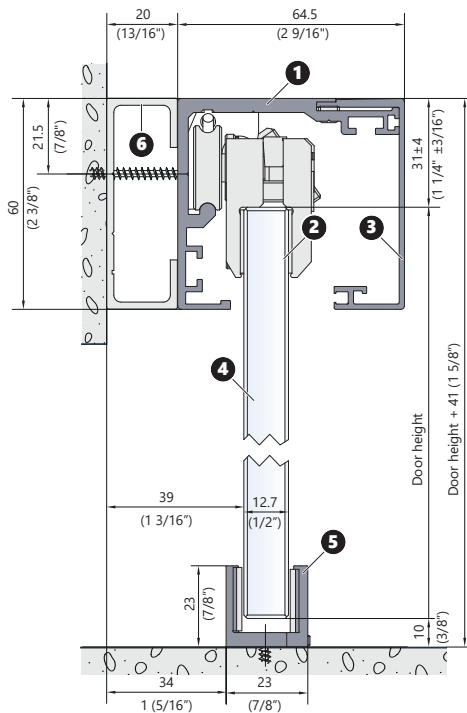
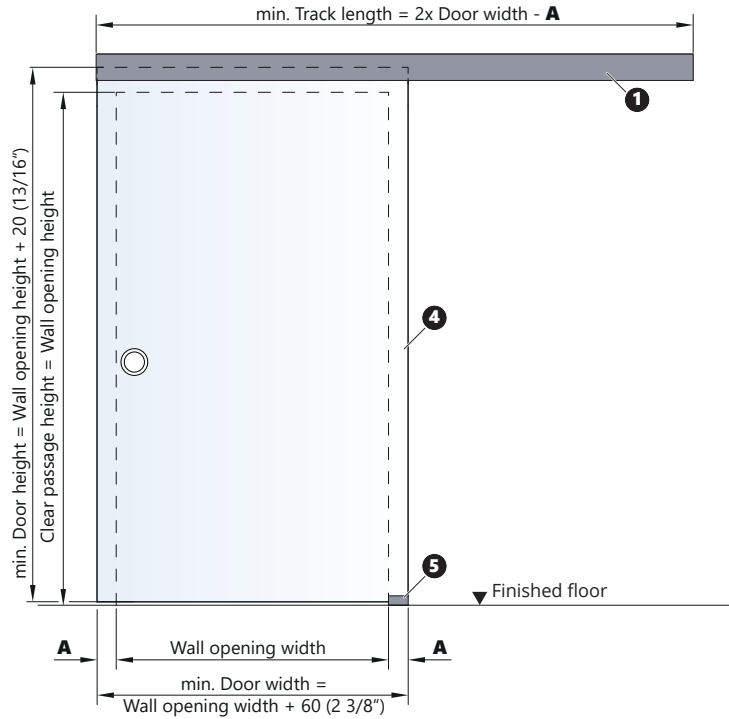
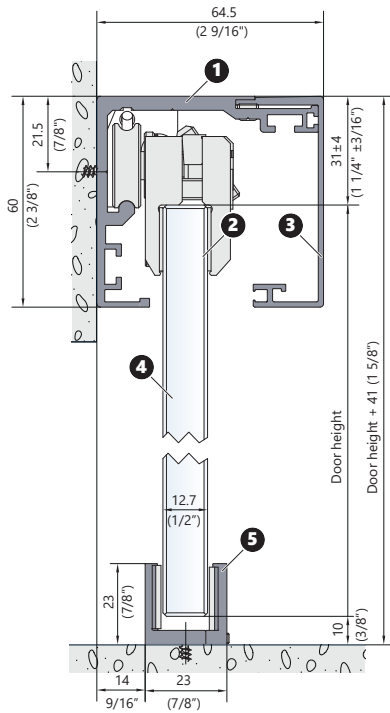
Both sides softclose



This optional premium accessory ensures a gentle, smooth opening and closing of doors up to 176 lb.

Drawings and formulas

Dimensions for glass doors



- A** Door leaf overlap (min. 30 mm/
- 1** Box track
- 2** Wheel set with clamps
- 3** Valance
- 4** Door leaf
- 5** Floor guide (also for glueing)
- 6** Distance profile



A brand of Bartels USA, Inc.

1901 Tigertail Blvd, Dania Beach, FL 33004

PH: 786-791-8557

E: sales@falkenstein-doors.com

State 03/2024