



# CONtura

Frameless Interior Doors -  
Modern, Quiet & Seamless



Frameless swing door system CONTURA, 1-panel with white lacquered wooden door panel, right hand pull/outswing (left), left hand push/inswing (right)

## Minimalistic design - understated look

Interior doors that are flush with the wall and have no visible frame are great minimalist elements for modern design projects. The hidden door frame allows the door panel to visually merge with the surroundings, creating a clean walk through space when the door is open and a seamless transition from wall to door when closed. This system is made even more luxurious with the option of soft-close hardware that slows the movement of the door allowing it to come to a quiet and controlled close.

### FEATURES

- Invisible aluminium frame
- Optional Soft-Closing
- Comes with a magnetic latch and European handle
- Inswing and outswing frame options available
- Compatible with wood or metal framing and masonry

### DESIGN

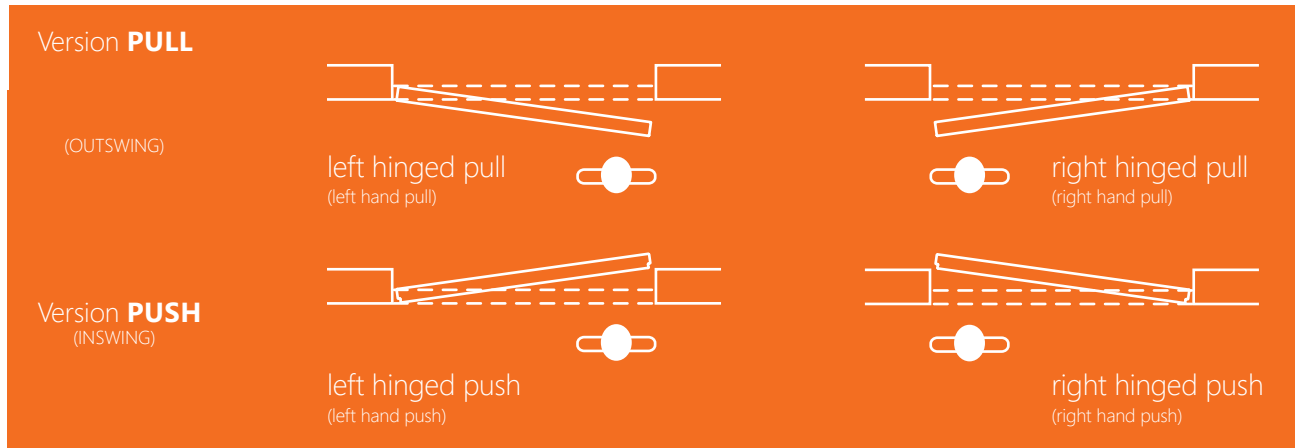
- Flush wall appearance
- Clean minimalist design
- Many finishes of the door panel available
- Concealed hinges

### BENEFITS

- Ideal value for money
- Installation in existing buildings (to replace old doors and frames)
- For up to 36" x 96" large doors
- With header for conventional use, without header for floor to ceiling applications
- Effortless installation
- Warranty on profiles

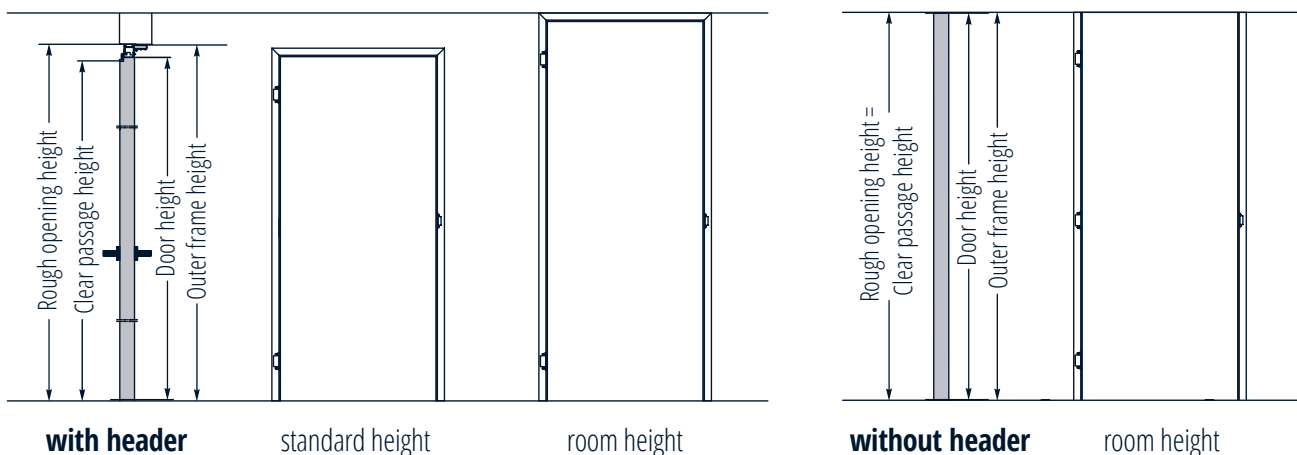
# Flush with the wall

Flush with the wall door systems were designed to be the perfect design companion to minimalist modern design. The CONTura door frame is characterized by the absence of a visible door frame, minimizing the visual transition from door to wall. The CONTura is available in inswing or outswing options for optimum functionality; and special design consideration was given allowing the header gap remains visually aligned in both versions allows easy on-site integration.



## Custom design options

CONTura can be customized to fit custom door sizes and be supplied in a header-free floor-to-ceiling version. The frameless door kit offers high-quality versatility in its purist form.





# The flush swing door system

The CONTura door frame is constructed from a robust aluminum profile and thoughtfully designed to make installation as easy as possible. Our system is designed for **1 9/16" thick door panels and can be used with all common stud framing options and 1/2" drywall**. The powder coated white frame is delivered pre-routed for the concealed hinges included with the CONTura system. Each frame kit includes our innovative corner braces to aid in accurate and efficient installation into each opening.



## 1. Frame

The frame surface is powder coated white (RAL 9016). Using an appropriate primer, this can be easily customized (on site) to create an individual look. The contour of the frame also serves as a mechanically interlocking base for the fibre reinforced compound



## 2. Magnetic latch strike plate

The magnetic strike plate is the modern alternative to the traditional wrap around plates. This optional feature, used together with our magnetic mortise, gives the door system a clean and elegant finished look.



## 3. Concealed hinges

The hinge routing is designed to match the requirements of each individual door, using either 2 or 3 hinges, depending on the size.



## 4. Soft self-closing (optional, for door leaves up to 88 lb)

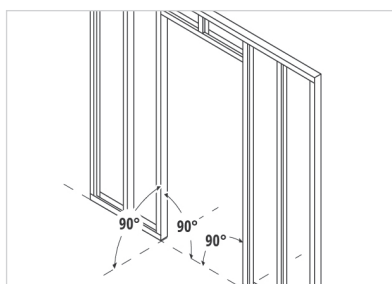
The soft close feature slows the door panel down allowing it to come to a slow and controlled close.



## 5. Mounting aid

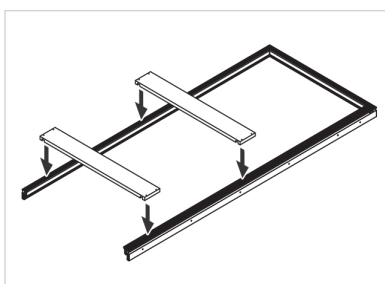
The supplied spacer boards and Z-brackets ensure the frame keeps the factory defined width, allowing your site team to finish surrounding areas before installing the door panel.

# Simple & safe installation



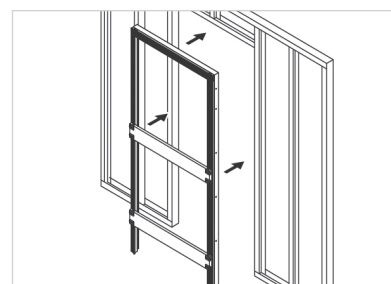
## 1. Define dimensions

See calculation table for rough opening dimensions.



## 2. Assembly of the frame

The position of the two OSB spacer boards is specified.



## 3. Insert frame - ready!

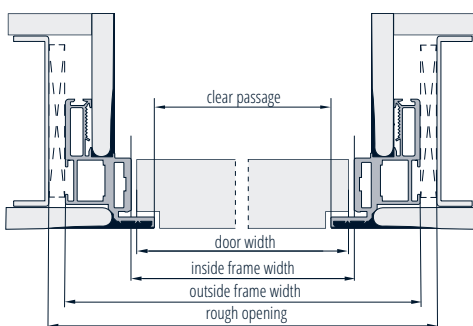
One-man assembly possible thanks to special 3D stop bracket.

Our portfolio is optimized for easy installation by just one person. The frame profiles are assembled by connecting them with corner brackets. During installation, spacer boards prevent it from shifting or twisting. Frames are installed to AFF level. After adjustment, the door frame is fixed in place. The entire wall, including the frame, can now be finished and the door installed.

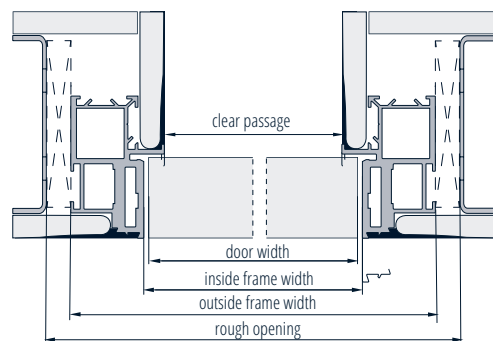


# CONTURA sets standards

## PUSH variant



## PULL variant

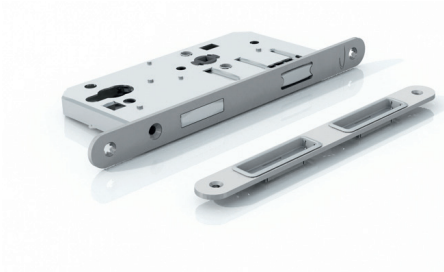


	Width					Height WITH header			Height WITHOUT header		
Rough opening	27 3/8"	31 3/8"	33 3/8"	35 3/8"	39 3/8"	82 5/16"	86 5/16"	98 5/16"	80 3/8"	84 3/8"	96 3/8"
Door leaf	24"	28"	30"	32"	36"	80"	84"	96"	80"	84"	96"
Outside frame dimension	27 5/16"	31 5/16"	33 5/16"	35 5/16"	39 5/16"	82"	86"	98"	80 5/16"	84 5/16"	96 5/16"
PUSH clear passage	23"	27"	29"	31"	35"	81 13/16"	85 13/16"	97 13/16"	80 3/8"	84 3/8"	96 3/8"
PULL clear passage	23 3/8"	27 3/8"	29 3/8"	31 3/8"	35 3/8"	80"	84"	96"	80 3/8"	84 3/8"	96 3/8"

CONTura can be customized from the standard sizes shown above (max. 36" x 96" door size).

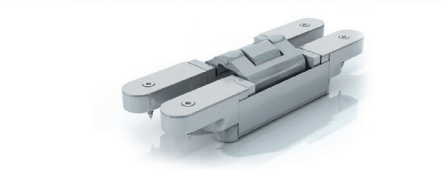
# Accessories

Even the basic version of the CONTura door system offer you many advantages over conventional kit solutions or self-designed construction of flush-wall frames for swing doors. Components of the standard kit: Frame, sound seal, door leaf, concealed hinges.



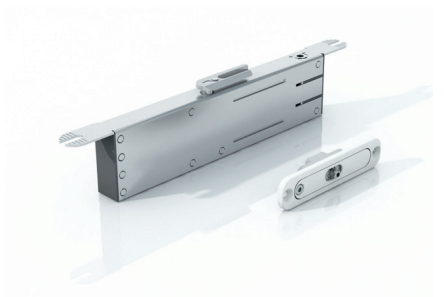
## Magnetic latch lock and magnetic striking plate

Thanks to its compatibility with all standard European handle options, CONTura can be integrated into existing design concepts. Alternatively, European lock variants can also be used to maximise design diversity and functionality.



## Concealed hinges with 3D adjustability

The hinge routing is designed to match the requirements of each individual door, using either 2 or 3 hinges, depending on the size.



## Soft self-closing (for door leaves up to 88 lb)

The soft close feature allows the door to come to a slow and controlled close. It also reduces the risk of pinched fingers.



## European lever handle with 3-piece rosette

The L-shape is one of the design classics among handles. They are based on basic geometric shapes, leave an elegant impression and will match any interior design. Available as passage or privacy options and in black or satin stainless steel finishes.



## Smooth, matte, white lacquer or primed

No door finish can be ingratiated better with the rest of your design than white. White lacquer doors carry a timeless, elegant appearance that compliments any design. A primed door allows you to let your creativity take over and make the door truly your own. By adding a custom wallpaper or paint color the door can blend in with the wall making the transition from wall to door virtually invisible.

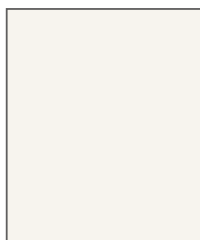
# Colors & Finishes

Great functionality deserve impeccable design. With our hardware and door finish options, CONTura caters to all styles and designs you can imagine. Our tailored solutions effortlessly combine innovation and elegance, enhancing the beauty of any space

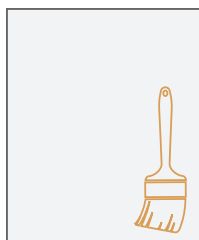
## Lacquer



RAL 9016  
Traffic White

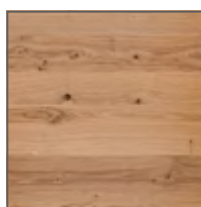


RAL 9010  
Pure White

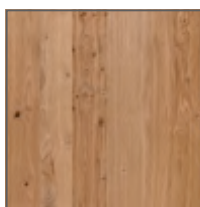


Primed

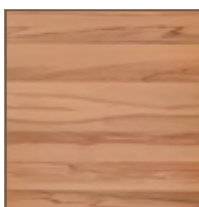
## Real Wood Veneer



Wild Oak  
Cross Matte



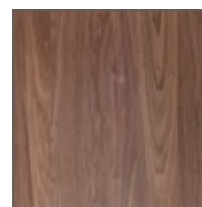
Wild Oak Matte



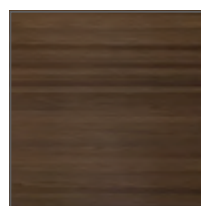
Core Beech  
Cross Matte



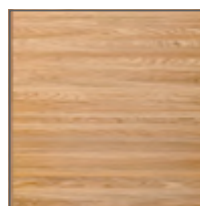
Can. Maple  
Matte



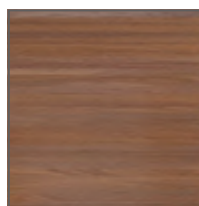
Americ. Walnut  
Planked Matte



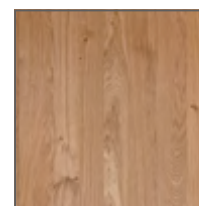
Listello  
Smoked Oak



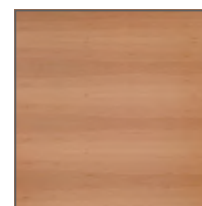
Listello White  
Oak Matte



Listello Walnut



Knotty Oak  
Matte



Americ. Cherry  
Cross Matte



A brand of Bartels USA, Inc.

1901 Tigertail Blvd, Dania Beach, FL 33004

PH: 786-791-8557

E: [sales@falkenstein-doors.com](mailto:sales@falkenstein-doors.com)

05/2025